

### Technical characteristics

#### Description

- Partition demountable via hidden profiling components.

#### Dimensions

- Standard module width between axes: 1,200 mm
- Standard floor/ceiling heights: 2,700 mm and 3,100 mm
- Tolerance absorption capacity on height:  $\pm 20$  mm
- Partition thickness: 80 mm
- Weight/m<sup>2</sup> with woodchip hardboard panels: 20.5 Kg

#### Frame

- Visible profiling and inner frame in Sendzimir galvanised steel.
- Quality in accordance with European standard EN 10142-A1:1994 (DX51D+Z).

#### Paintwork

- Previously degreased.
- Electrostatically coated with polyester powder or polyester epoxy and polymerised in furnace at 200°C.
- Average paint coat thickness: 50/60 microns.
- Colour tolerance: DIN 5033 standard.

#### Outer faces, mineral fibre, glass and doors

- Woodchip hardboard panels, edged and coated with semi-rigid vinyl, cotton-gauze or cellulose-based vinyl to be selected from the Movinord finish range. Other possible coating options include woods, laminates, etc.  
Total thickness: 13 mm.
- Inner insulation with semi-rigid, 50-mm thick, 30/40-Kg/m<sup>3</sup> Mineral Fibre.  
Reaction to fire: M0 (Incombustible).
- Flat, blind door leaves in woodchip hardboard with the same coating possibilities as the panels.  
Dimensions: 830 x 2,040 x 40 mm. Approximate weight: 40 Kg/Unit.  
Option: glazed door leaves.
- Fixed 52-mm gap double-glazed windows with glass stops and thermoplastic seals.
- Panes with thicknesses of between 4 and 6 mm.

#### Fittings

- Hinges and other metal fittings treated with the same paint, zinc, bluing coating, etc. depending on case.

### Performances

#### Demountability, re-installation

- The panes can be demounted from the frame independently thanks to the glass-stop system that runs around their edges on both sides.
- Each component can be completely demounted independently of the rest thanks to the horizontal and vertical splice joints which run along the entire length of the frame and create the grooves on the "hidden profiling" design.

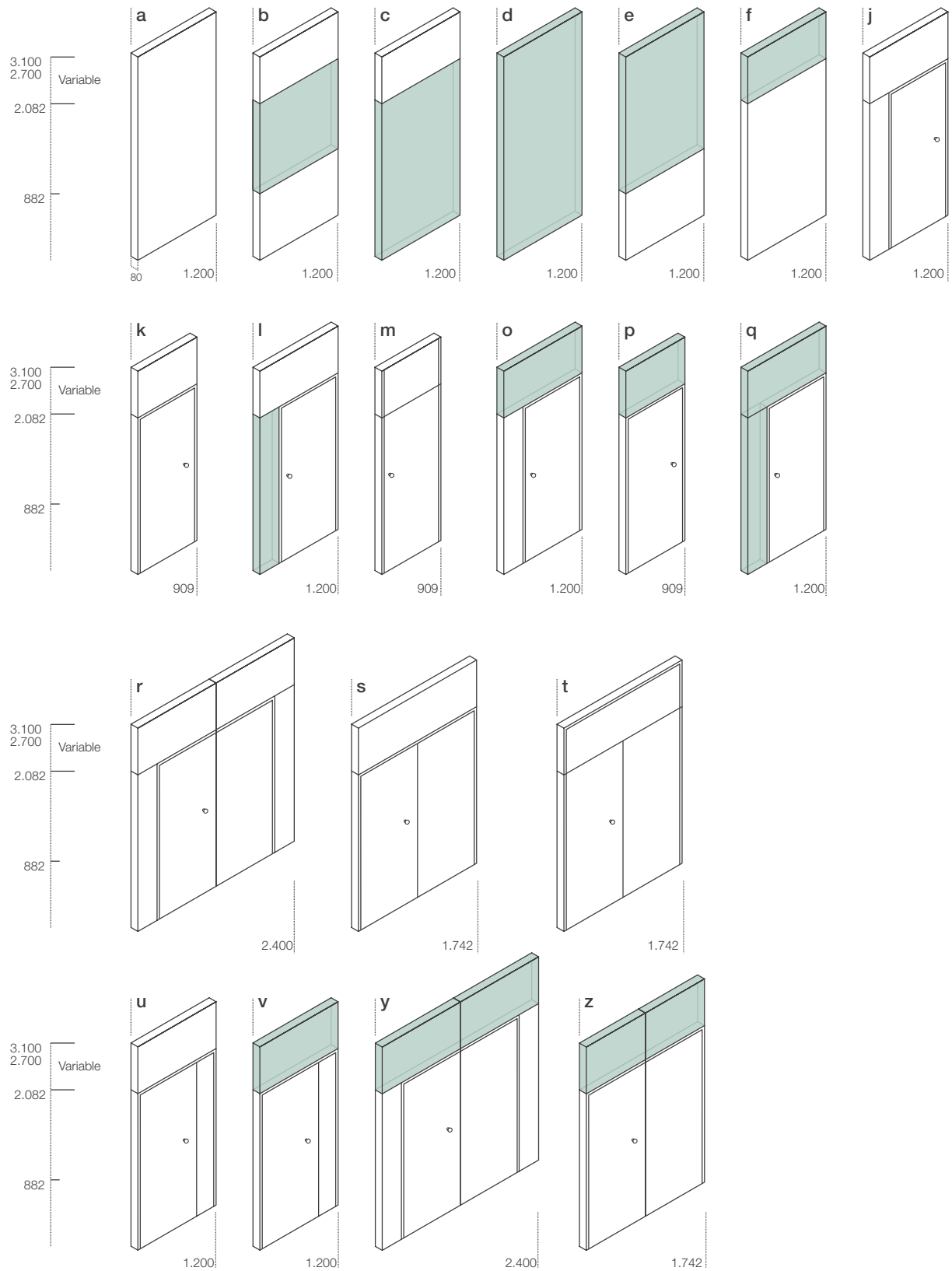
#### Sound insulation

- Blind module(A):  $R_w = 41,3$  dB (Applus-Spain in compliance with UNE 74040).

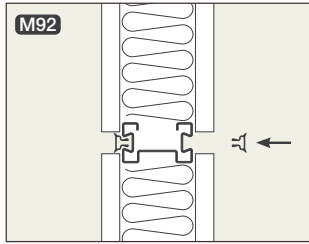
### Movinord Quality

All the processes used in the design, production, distribution and sale of MOVINORD's M92 demountable partition are quality assurance certified by AENOR (Spanish Standardisation and Certification Association) and IQNET (International Quality Network) per EN ISO 9001: 2000.

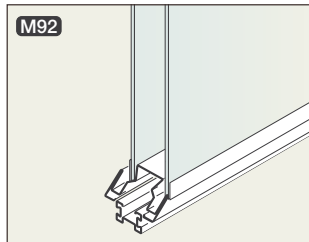
### Standard modules



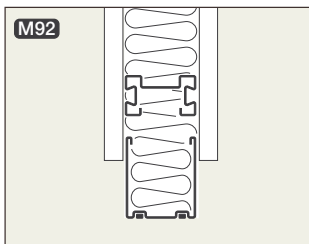
### Details and vertical sections



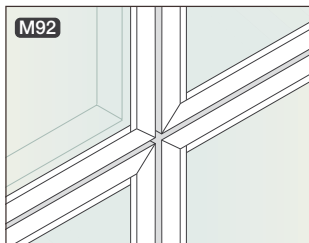
**Panel joints:** formed by horizontal and vertical splice joints.



**Glazed modules:** these are always double-glazed on the M92.



**Bottom runner:** the edged panelling hangs over the indented bottom runner and a third bracing fixture at the bottom fixes the panels.



**Frames:** The frames on the M92 system are mitred

